

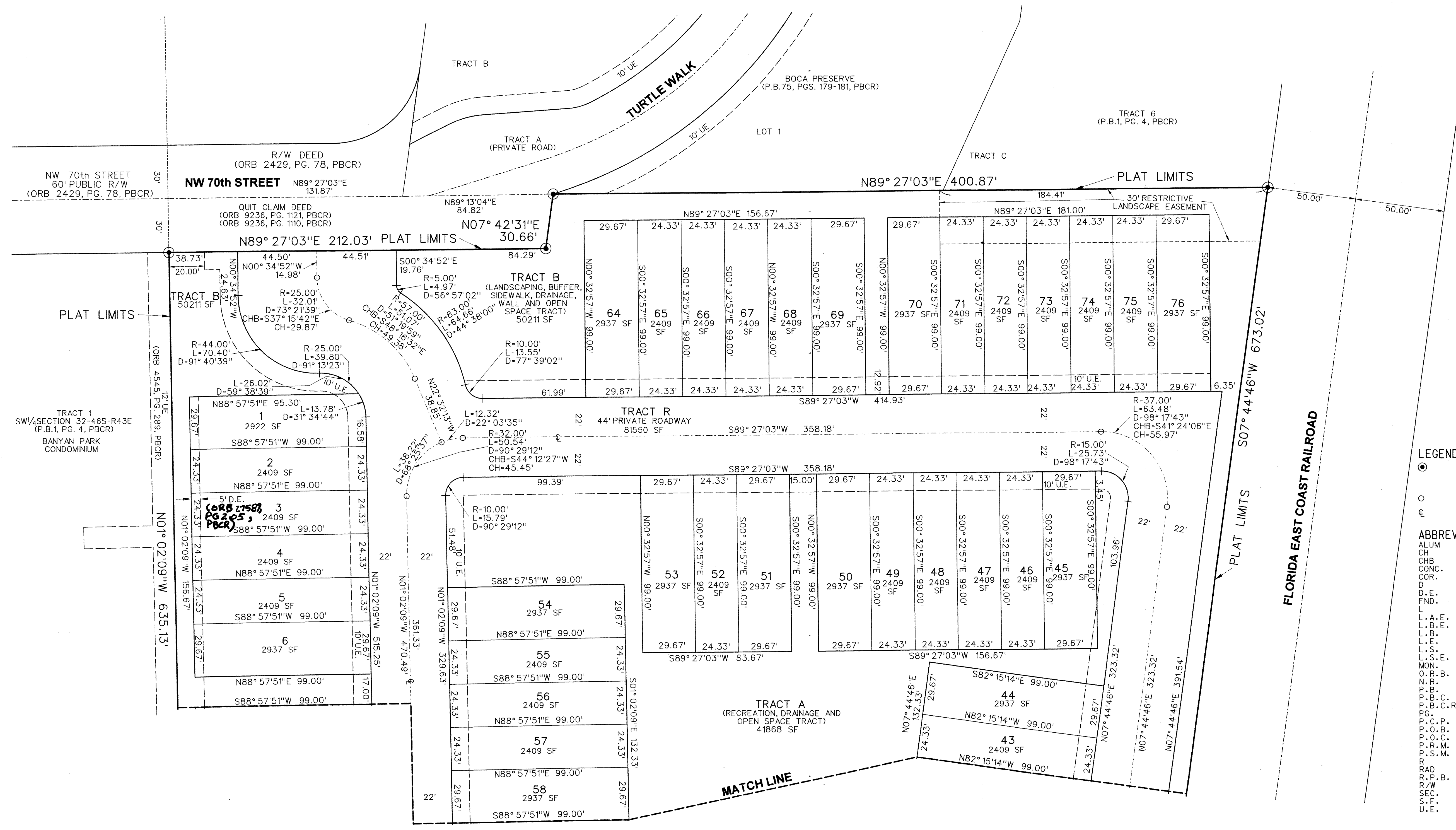
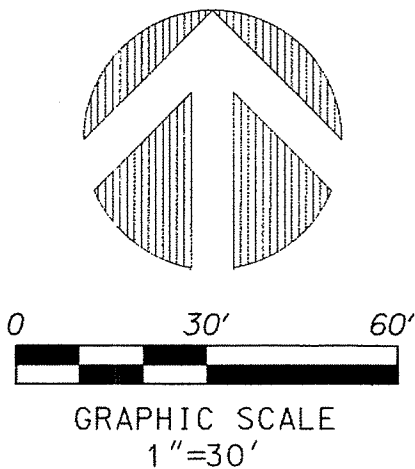
PERIMETER
 SURVEYING & MAPPING
 Certificate of Authorization No. LB7264
 Prepared by: Jeff S. Hodapp, P.S.M.
 947 Clint Moore Road
 Boca Raton, Florida 33487
 Tel: (561) 241-9988
 Fax: (561) 241-5182

BOCA HIGHLANDS

A REPLAT OF A PORTION OF TRACT 7 OF "MAP SHOWING SUBDIVISIONS OF PORTIONS OF TOWNSHIPS 45 AND 46 SOUTH, RANGE 43 EAST, DADE COUNTY, FLORIDA", (P.B. 1, PG. 4, P.B.C.R.)
 S.E. 1/4 SECTION 32, TOWNSHIP 46 SOUTH, RANGE 43 EAST,
 CITY OF BOCA RATON, PALM BEACH COUNTY, FLORIDA
 JANUARY, 2015

5

SHEET 3 OF 3



LEGEND:

ABBREVIATIONS:

- SET P.R.M. (UNLESS OTHERWISE NOTED)-4" X4" CONC. MON. WITH ALUMINUM DISK STAMPED P.R.M. #LB7264
- PERMANENT CONTROL POINT
- ⊕ STAMPED P.C.P. #LB7264 CENTERLINE
- ALUM ALUMINUM
- CH CHORD
- CHB CHORD BEARING
- CONC. CONCRETE
- COR. CORNER
- D DELTA (CENTRAL ANGLE)
- D.E. DRAINAGE EASEMENT
- FND. FOUND
- L ARCLength
- L.A.E. LIMITED ACCESS EASEMENT
- L.B.E. LANDSCAPE BUFFER EASEMENT
- L.B. LICENSED BUSINESS
- L.E. LANDSCAPE EASEMENT
- L.S. LICENSED SURVEYOR
- L.S.E. LIFT STATION EASEMENT
- MON. MONUMENT
- O.R.B. OFFICIAL RECORDS BOOK
- N.P. NON-RADIAL
- P.B. PLAT BOOK
- P.B.C. PALM BEACH COUNTY
- P.B.C.R. PALM BEACH COUNTY RECORDS
- PG. PAGE
- P.C.P. PERMANENT CONTROL POINT
- P.O.B. POINT OF BEGINNING
- P.O.C. POINT OF COMMENCEMENT
- P.R.M. PERMANENT REFERENCE MONUMENT
- P.S.M. PROFESSIONAL SURVEYOR & MAPPER
- R. RADIAL
- RAD. RADIAL
- R.P.B. ROAD PLAT BOOK
- R/W. RIGHT-OF-WAY
- SEC. SECTION
- S.F. SQUARE FEET
- U.E. UTILITY EASEMENT